

CLEAR PATH — FINANCIAL —

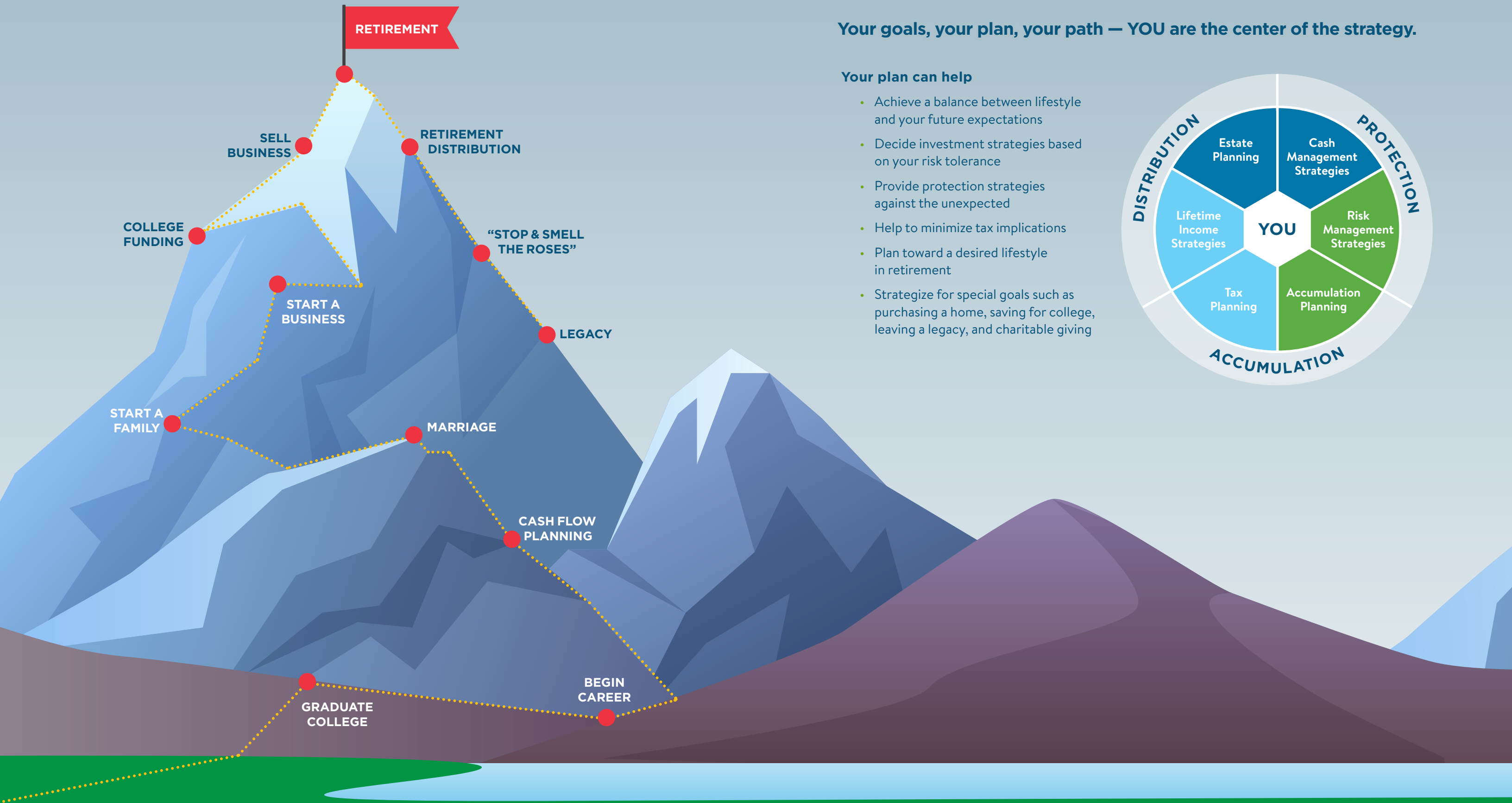
Investments | Insurance | Retirement



OUR MISSION

We guide families and businesses to make sound financial decisions; delivering a Clear Path to their dreams.





Your goals, your plan, your path — YOU are the center of the strategy.

Your plan can help

- Achieve a balance between lifestyle and your future expectations
- Decide investment strategies based on your risk tolerance
- Provide protection strategies against the unexpected
- Help to minimize tax implications
- Plan toward a desired lifestyle in retirement
- Strategize for special goals such as purchasing a home, saving for college, leaving a legacy, and charitable giving



COLLABORATION IS ESSENTIAL



You may already have trusted advisors, such as a CPA or Attorney, and you may have crucial personnel in your business, such as an HR Director. We collaborate with our client's existing trusted advisors to create an environment where all stake-holders achieve a high level of personal and professional fulfillment. A clear understanding of roles and a healthy work/life balance help our team and our clients prosper today and tomorrow.



CONTACT US

HORSHAM

220 GIBRALTAR ROAD SUITE 350
HORSHAM, PA 19044
PHONE: (215) 293-9356
FAX: (215) 441-4123

PHILADELPHIA

30 SOUTH 17TH STREET
PHILADELPHIA, PA 19103
PHONE: (215) 293-9356
FAX: (215) 441-4123

CENTER VALLEY

3701 CORPORATE PARKWAY SUITE 350
CENTER VALLEY, PA 18034
PHONE: (215) 293-9356
FAX: (215) 441-4123

www.clearpath2.com

Securities, investment advisory and financial planning services offered through qualified registered representatives of MML Investors Services, LLC. Member SIPC. Supervisory Office: 220 Gibraltar Road, Suite 350, Horsham, PA 19044. (215)441-8200. Clear Path Financial is not a subsidiary or affiliate of MML Investors Services, LLC or its affiliated companies. Any discussion of taxes is for general information purposes only, does not purport to be complete or cover every situation, and should not be construed as legal, tax or accounting advice. Clients should confer with their qualified legal, tax and accounting advisors as appropriate.

CRN202506-2502913